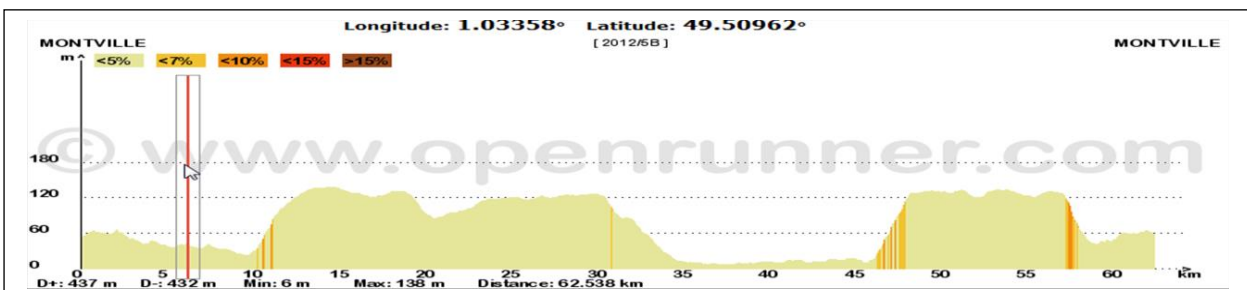
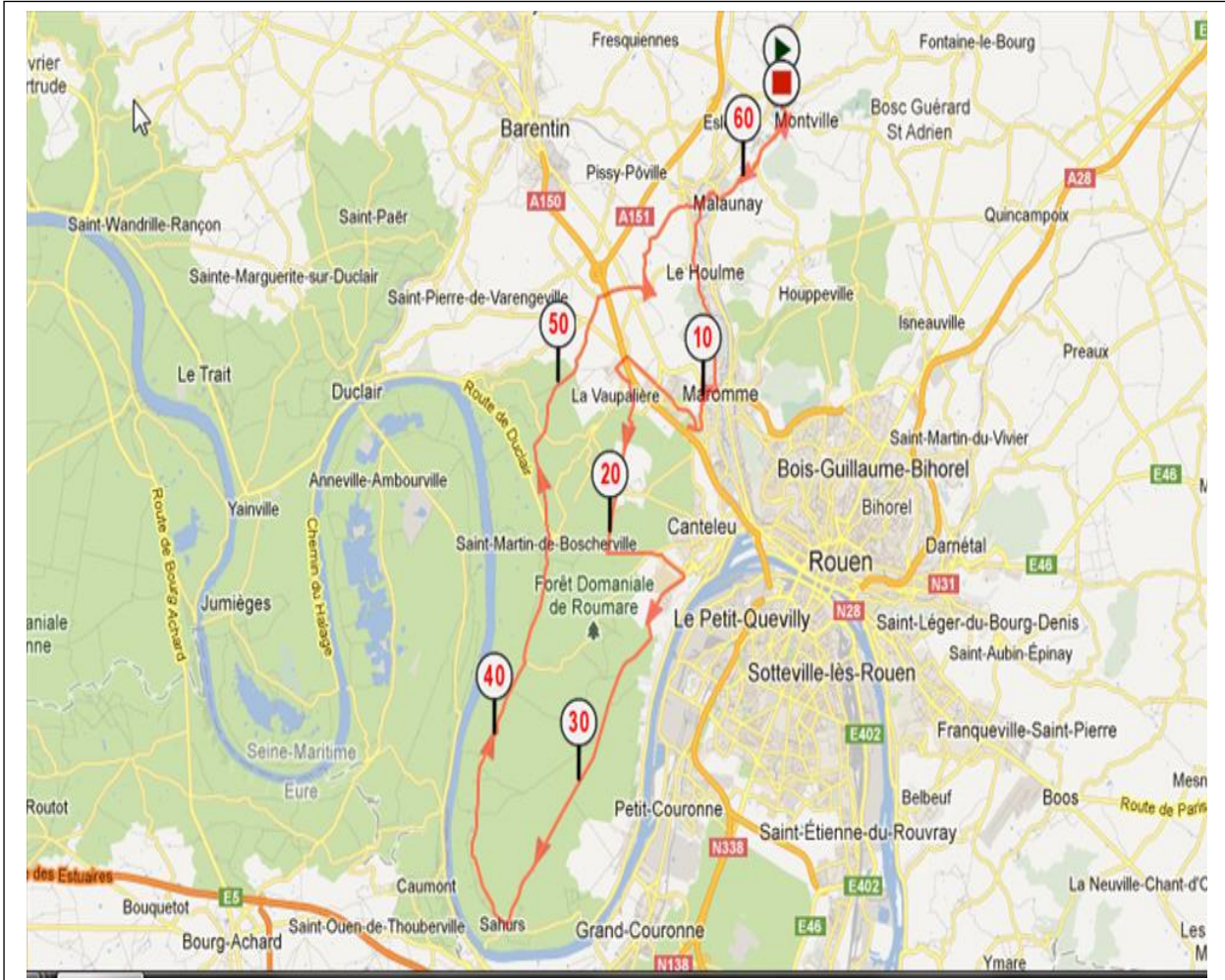


## PARCOURS N° 5B

62.538 Kms 437 M Dénivelé

Montville – Malaunay – Le Houleme – Maromme (Cimetièrè) – La vaupalière – Montigny – Carrefour du chêne (à gauche) – Canteleu – Sahurs – Quevillon – Saint martin de Boscherville – Henouville – Roumare –Montville



MES COMMENTAIRES